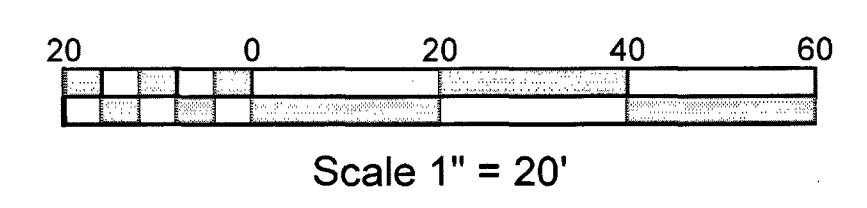
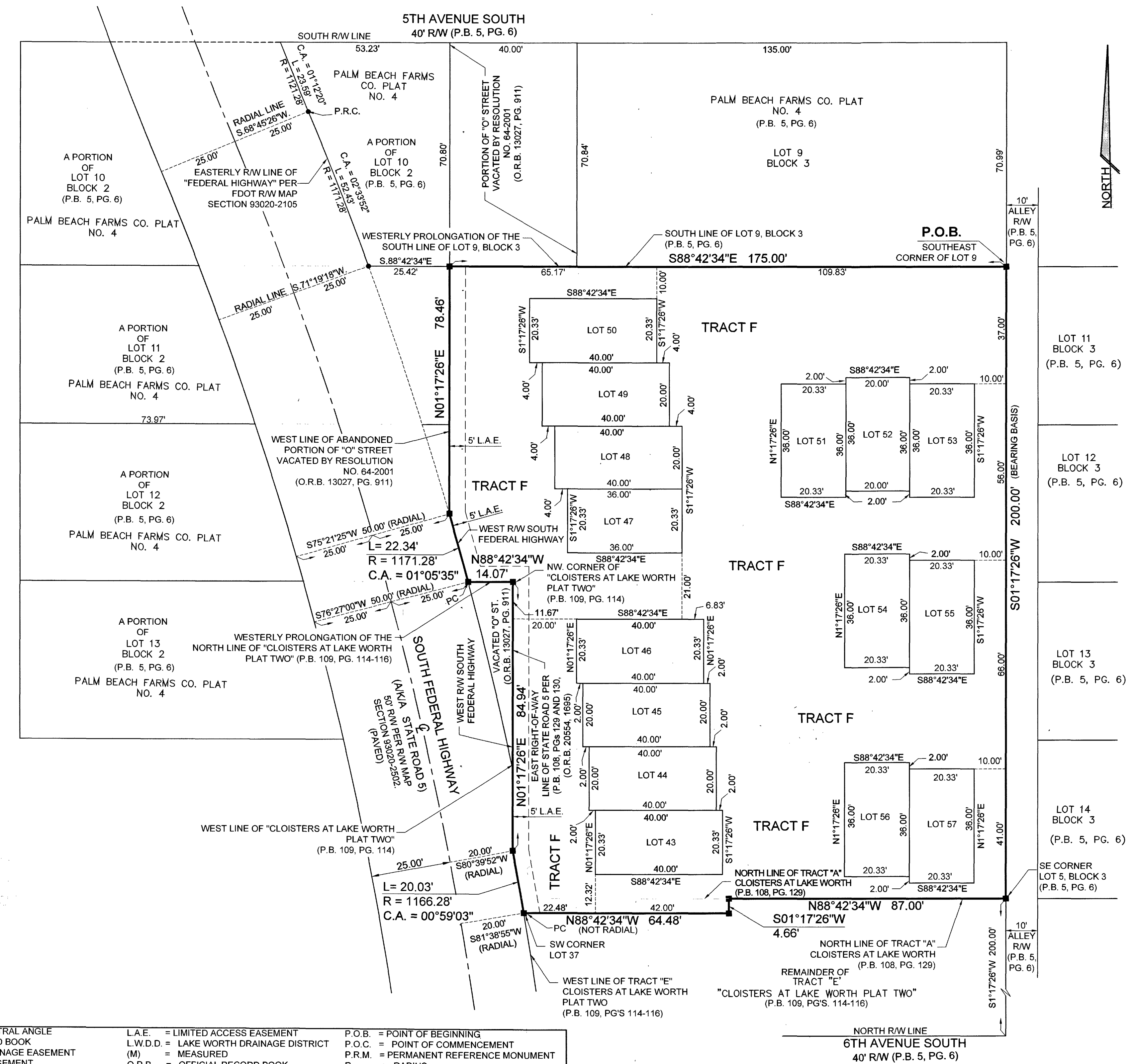


# CLOISTERS AT LAKE WORTH PLAT THREE

BEING A REPLAT OF LOTS 7 - 8, BLOCK 3, THE PALM BEACH FARMS COMPANY PLAT NO. 4, PLAT BOOK 5, PAGE 6 THROUGH 9, TOGETHER WITH

A REPLAT OF LOTS 37-42 AND A PORTION OF TRACT "E", CLOISTERS AT LAKE WORTH PLAT TWO, PLAT BOOK 109, PAGES 114 THROUGH 116, ALL IN THE PUBLIC RECORDS OF PALM BEACH COUNTY, FLORIDA. BEING IN SECTION 27, TOWNSHIP 44 SOUTH, RANGE 43 EAST, CITY OF LAKE WORTH BEACH, PALM BEACH COUNTY, FLORIDA AND

A PORTION OF ABANDONED "O" STREET, RECORDED IN OFFICIAL RECORDS BOOK 13027, PAGE 911. NOVEMBER 2023



**LEGEND:**

● = SET P.C.P., "P.K." NAIL & DISC STAMPED "M.L.S." LB # 6838"	C.A. = CENTRAL ANGLE	L.A.E. = LIMITED ACCESS EASEMENT	P.O.B. = POINT OF BEGINNING
■ = SET PERMANENT REFERENCE MONUMENT (P.R.M.) 4" X 4" CONCRETE MONUMENT STAMPED "M.L.S., L.B.#6838"	D.B. = DEED BOOK	L.W.D.D. = LAKE WORTH DRAINAGE DISTRICT (M) = MEASURED	P.O.C. = POINT OF COMMENCEMENT
⊕ = CENTERLINE	D.E. = DRAINAGE EASEMENT	O.R.B. = OFFICIAL RECORD BOOK	P.R.M. = PERMANENT REFERENCE MONUMENT
	EASE. = EASEMENT	P.B. = PLAT BOOK	R = RADIUS
	FD. = FOUND	P.B.C. = PALM BEACH COUNTY	R.W. = RIGHT OF WAY
	F.D.O.T. = FL DEPT. OF TRANSPORTATION	PG. = PAGE	U.E. = UTILITY EASEMENT
	L = ARC LENGTH	P.C.N. = PROPERTY CONTROL NUMBER	L.A.E. = LIMITED ACCESS EASEMENT

PREPARING SURVEYOR & MAPPER'S STATEMENT THIS INSTRUMENT WAS PREPARED BY MICHAEL J. MILLER, P.S.M. 4034 IN THE OFFICE OF MILLER LAND SURVEYING, 1121 LAKE AVE., LAKE WORTH BEACH, FL 33460		REF'S: 133/29 S81/30 O61/61 Z14/25 B87/77
SCALE: 1" = 20' DRAWN BY: MJM FIELD WK: M.M./B.M. DATE: NOVEMBER 2023	<b>MILLER LAND SURVEYING</b> 1121 LAKE AVENUE LAKE WORTH BEACH, FLORIDA 33460 PHONE: (561) 586-2669 • FAX: (561) 582-0151 WWW.MILLERSURVEYING.COM E-MAIL: MILLERSURVEYING@AOL.COM	PREV. JOB NO'S: Y050594 SEE S-41,472 Y160599 Y160894
		JOB NO. Y210632 L - 2258